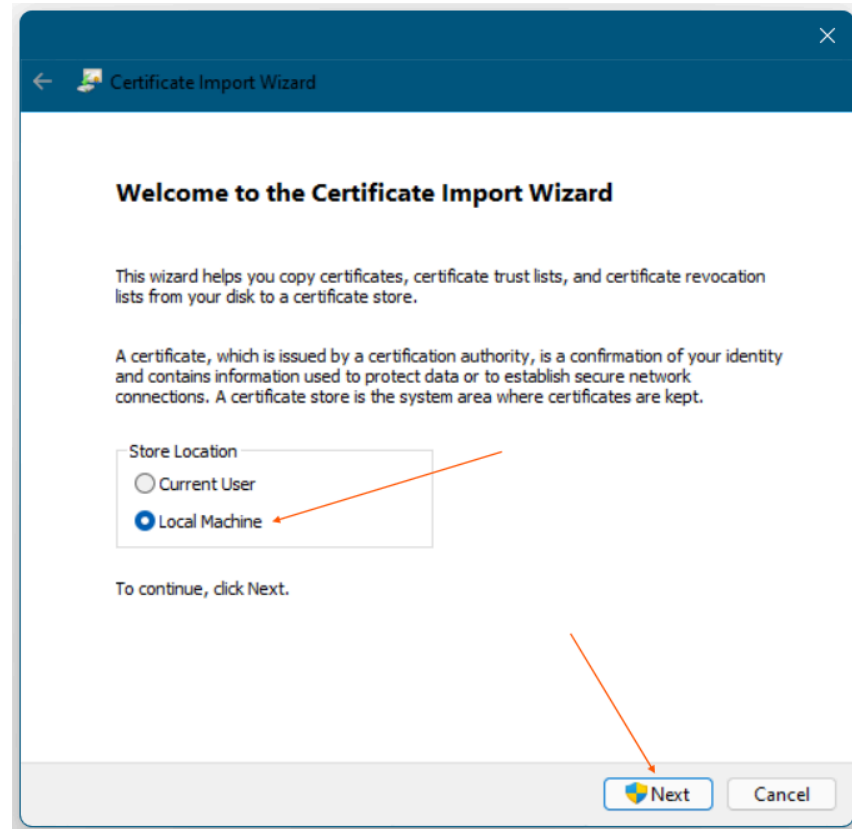
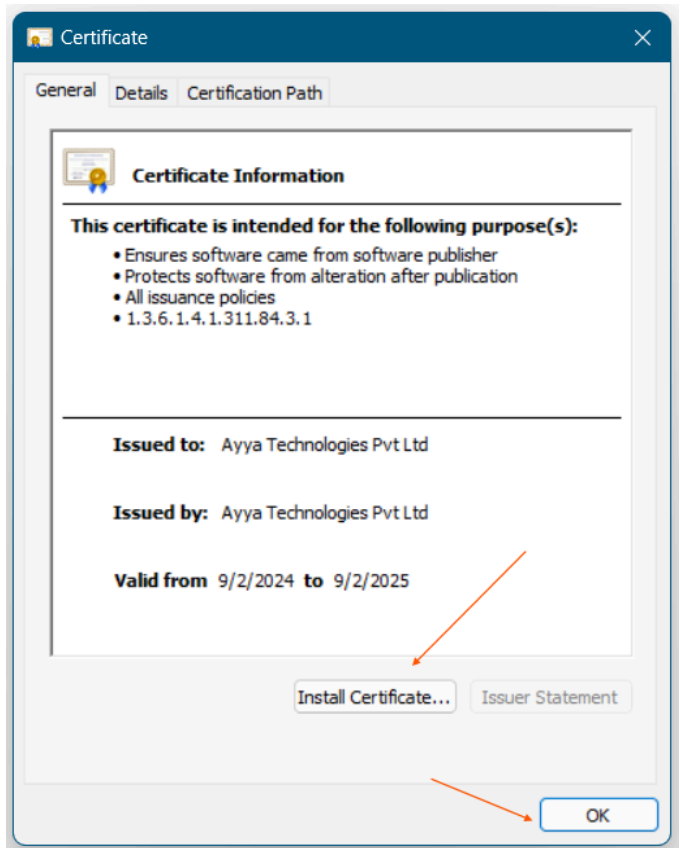


# Margin Keys Adapter Installation Guide

1. Double click on 'Certificate'

2. Click "Install Certificate" then click "Ok"

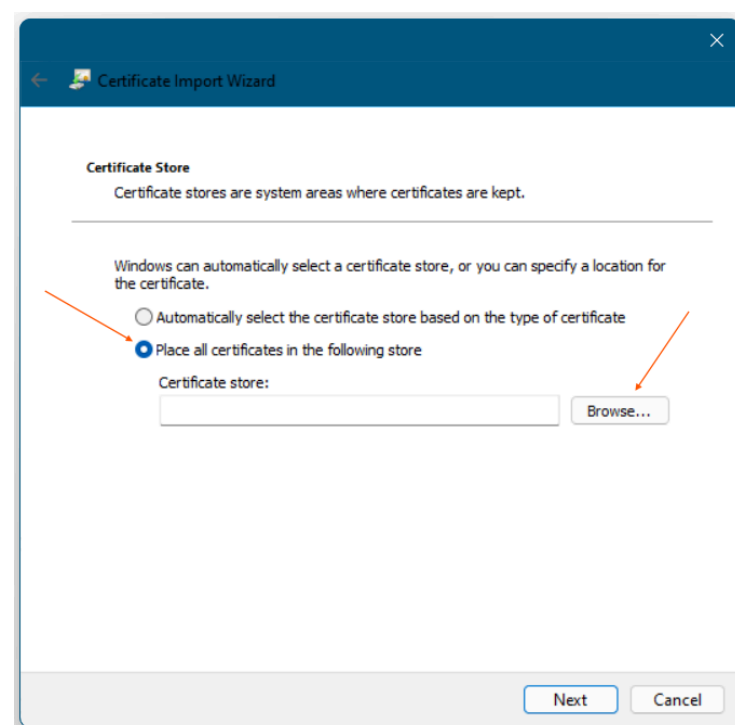
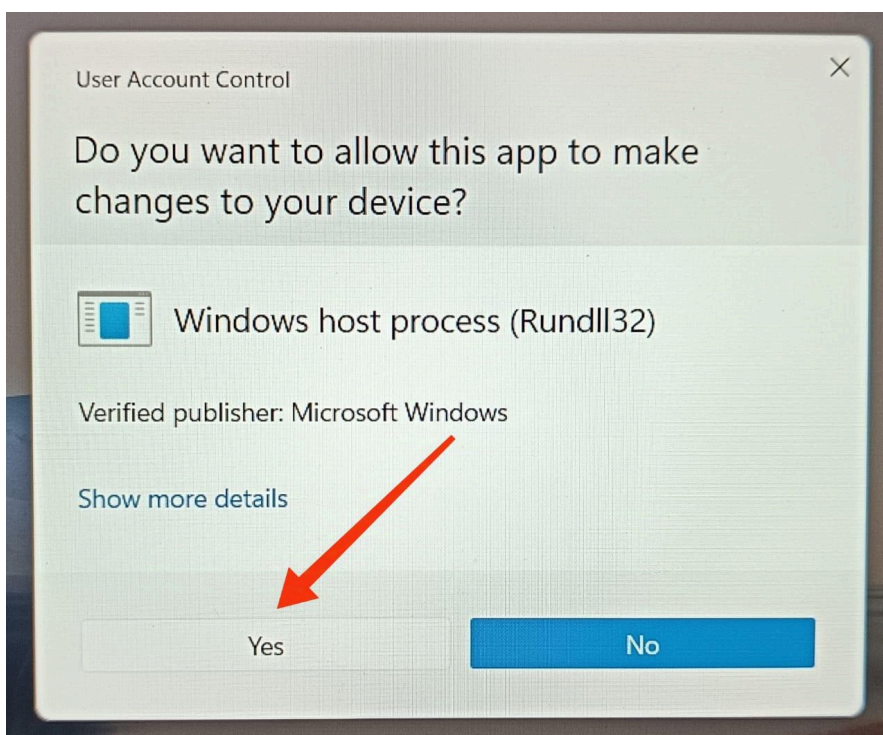
3. Select "Local Machine" then click "Next"

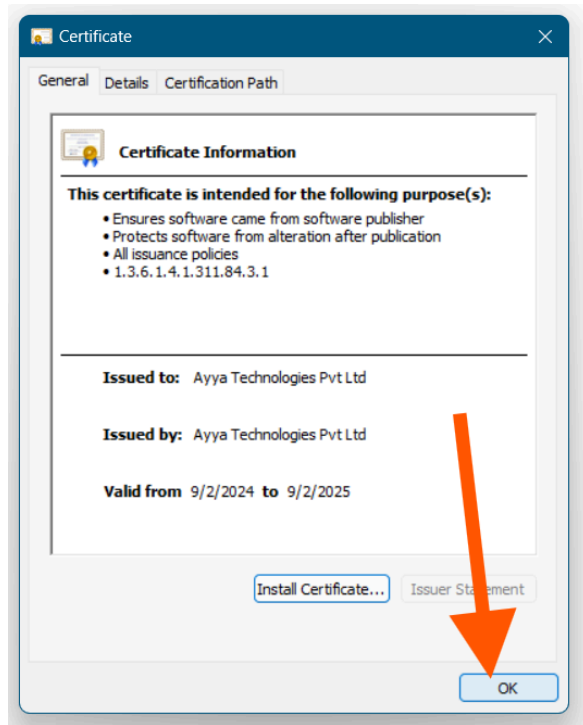
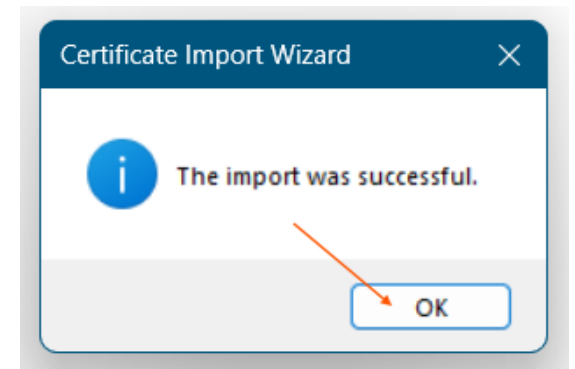
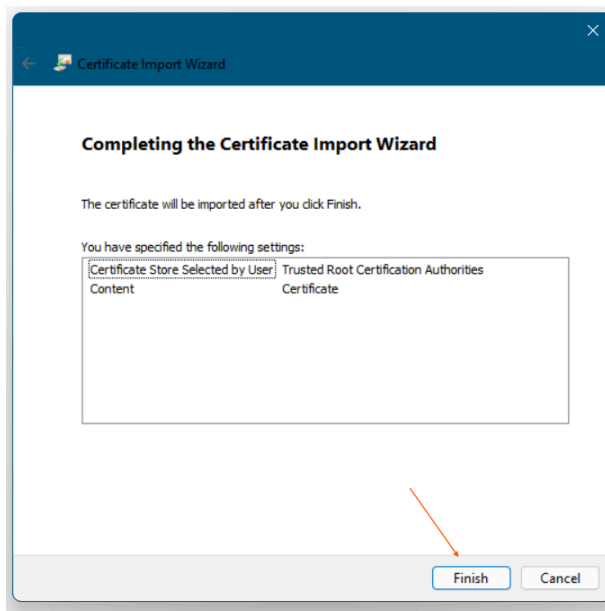
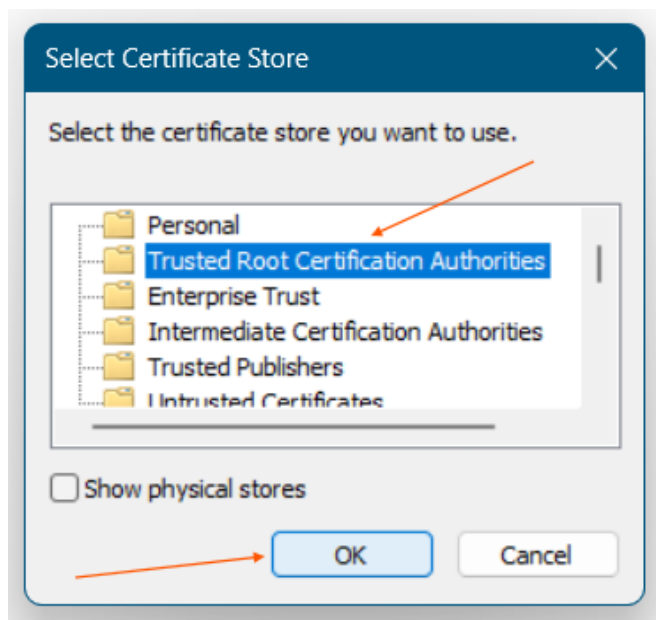


4. Click on "Yes"

5. Select "Place all certificates in the following store" then click "Browse"

6. Click "Yes" in User Account Control dialog





7. Double click on “Setup” msix file

8. Click on “Install”